

Visit Historical Cemeteries
 In Pike County, Missouri

Tomb- Stone Tours

Place
Stamp
Here

Pike County Tourism Commission
 P.O. Box 147
 Bowling Green, MO 63334
 (573) 324-2077

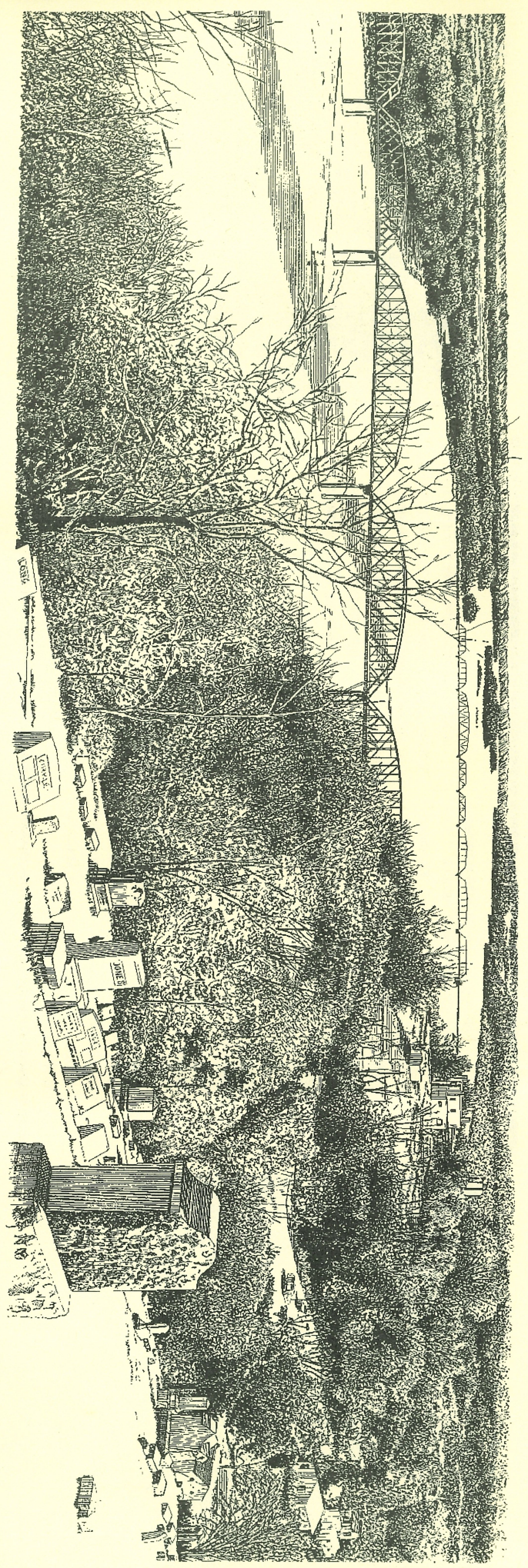


Tomb- Stone Tours

Pike County, Missouri

08/97 30M

	Bed & Breakfasts	Motel	Camping - Tent	Camping - Hookups	Groceries	Fast Food	Dining	Gas	Auto Supplies	Playground	Picnic Sites	River Views	Artisans	Antiques	Crafts	Museums	Historic Sites	Airport	Special Events	Trail Rides	Fishing		
Amish Community																							
Ashburn																							
Bowling Green																							
Clarksville																							
Curryville																							
Eolia																							
Frankford																							
Louisiana																							
Paynesville																							



Riverview Cemetery in Louisiana

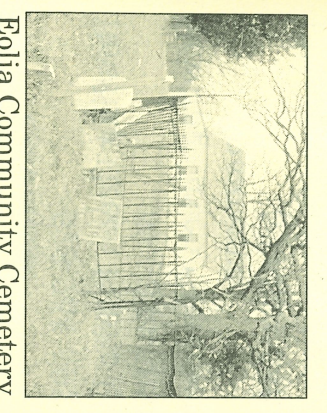
Drawing by John Stoeckley, Reflections of Missouri ©

In these cemeteries are buried victims of Indian massacres, Revolutionary and Civil War soldiers, statesmen, legislators and community leaders. There are Protestant, Catholic, Jewish, African American, community and family cemeteries.

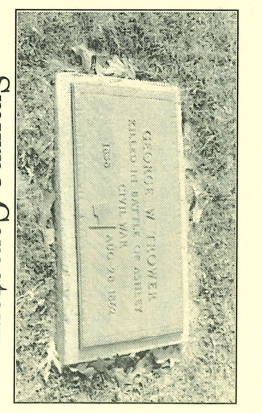
Revealed on tombstones is the tragedy of epidemics. Entire families died in a short time. Infant death is common.

Also on view are signs that families decided this is a good place to live and raise children. Many generations of some families were born, raised and spent all of their lives in Pike County. This tradition continues today in many instances.

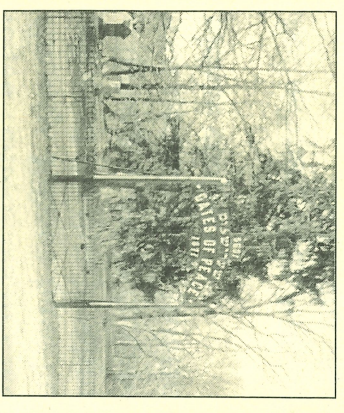
Pike County was a stepping off place for the great migration to the west. It, therefore, offers a wealth of information for those interested in the genealogy of their family. Most of the cemeteries in Pike County have been cataloged by the Daughters of the American Revolution, Pike County Chapter. The catalogs are available in each of the Pike County libraries.



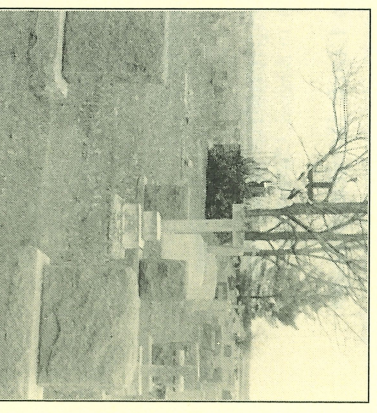
Eolia Community Cemetery



Smyrna Cemetery



Gates of Peace Cemetery

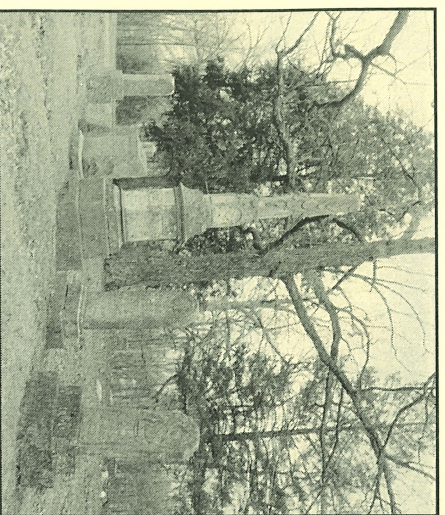


St. Clement's Cemetery

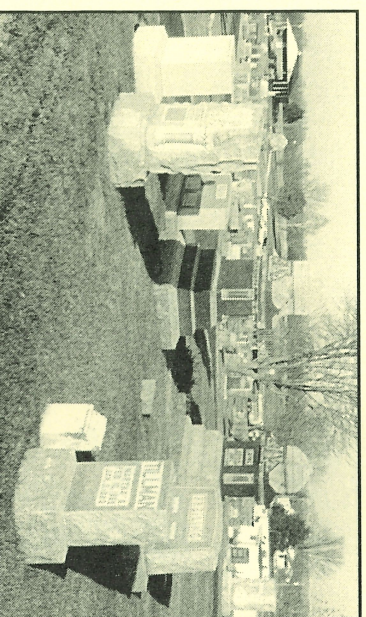
Tomb- Stone Tours

There are more than 150 cataloged cemeteries in Pike County. Fifteen have been selected for this brochure. For a listing of other cemeteries and genealogical information, please contact:

- Louisiana Public Library
573-754-4491
- Louisiana Chamber of Commerce
573-754-5921
- Bowling Green Public Library
573-324-5030
- Bowling Green Chamber of Commerce
573-324-5451
- Pike County Recorder's Office
573-324-5567
- Clarksville City Hall
573-242-3336



St. John's Episcopal Cemetery



Frankford Cemetery

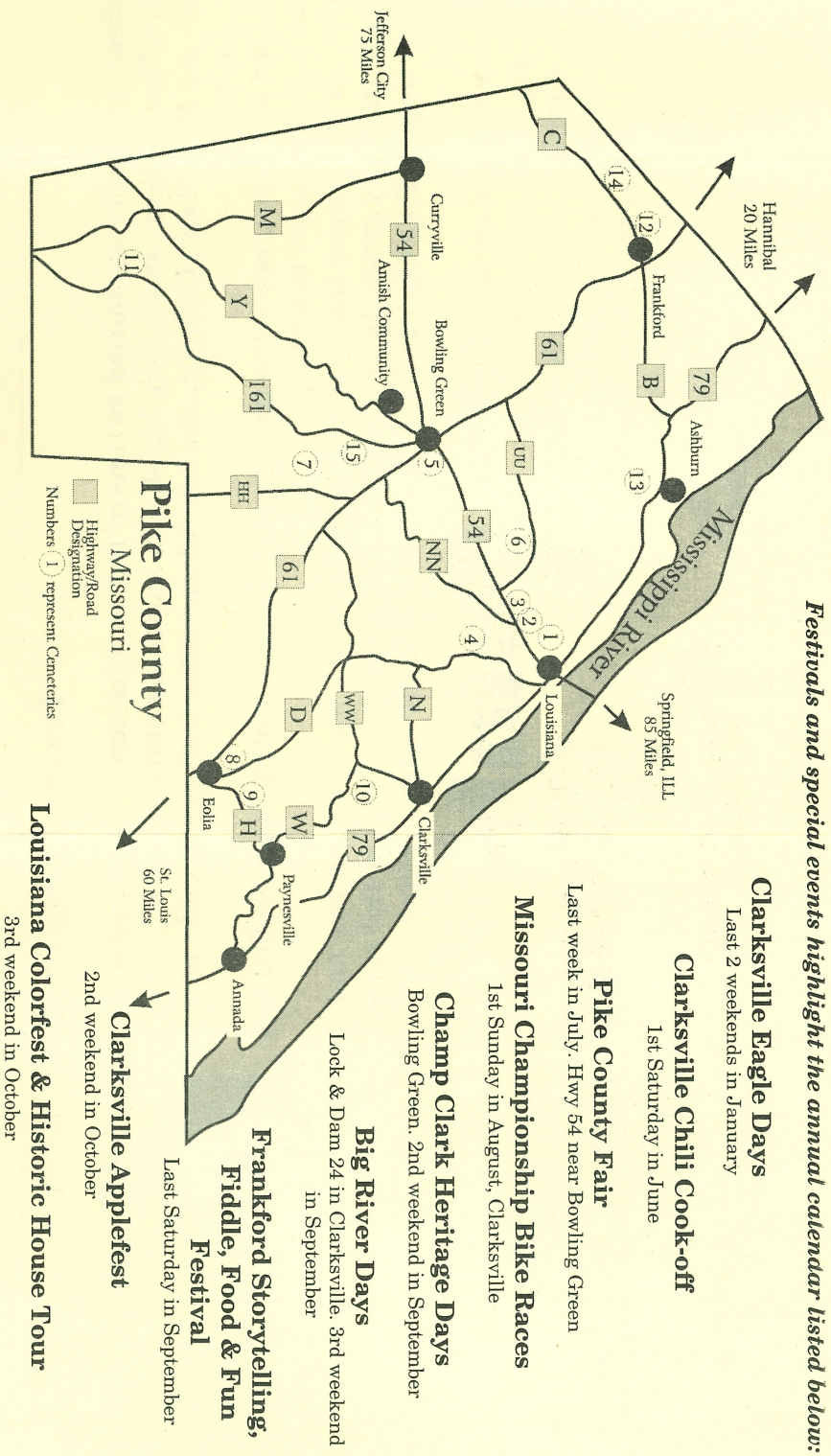
RINTERVIEW CEMETERY in Louisiana contains more than 14,000 graves. It is a beautiful location overlooking the Mississippi River and is the burial place of: Governor Lloyd Stark; founders of LaCrosse Lumber Co.; George Trimble, philanthropist; Prof. R. R. Rowley, noted scientist; and Sillas W. Farber, founder of Farber, Missouri. [11] on the map. In Louisiana, take 7th Street north across Hwy 54 to the end. Entrance will be visible to the right.

JACKSON FAMILY CEMETERY, next to the Catholic Cemetery in Louisiana is the burial site of Christopher Jackson, Revolutionary War veteran. [2] on the map. From Georgia Street in Louisiana, take Haley Avenue north to the second stop sign and turn left two blocks.

GATES OF PEACE CEMETERY is the only Jewish cemetery north of St. Louis in Missouri. [3] on the map. In Louisiana at the west end of Georgia Street.

BUFFALO CEMETERY, founded because of the Buffalo Fort massacre, has a monument at the site which describes the incident. Four Revolutionary War soldiers are also buried there. [4] on the map. From Hwy 79 south of Louisiana, take State Rd D 1.6 miles to County Rd 251 then west on 251 for 0.8 miles.

Festivals and special events highlight the annual calendar listed below:



Clarksville Eagle Days
Last 2 weekends in January

Clarksville Chili Cook-off
1st Saturday in June

Pike County Fair
Last week in July. Hwy 54 near Bowling Green

Missouri Championship Bike Races
1st Sunday in August, Clarksville

Champ Clark Heritage Days
Bowling Green. 2nd weekend in September

Big River Days
Lock & Dam 24 in Clarksville. 3rd weekend in September

Frankford Storytelling, Fiddle, Food & Fun Festival
Last Saturday in September

Clarksville Applefest
2nd weekend in October

Louisiana Colorfest & Historic House Tour
3rd weekend in October

Pike County is nestled along the Mississippi River bluffs and stretches into the prairie of northeastern Missouri. It is situated about 60 miles north of St. Louis.

The first settlers, who were fur traders, came into the area in the late 1700's followed by other settlers from Virginia and Kentucky bringing their love of quality homes, farms, horses and good schools.

As river commerce developed, towns were built along the river. Other communities were built along the railroads as they expanded through the county.

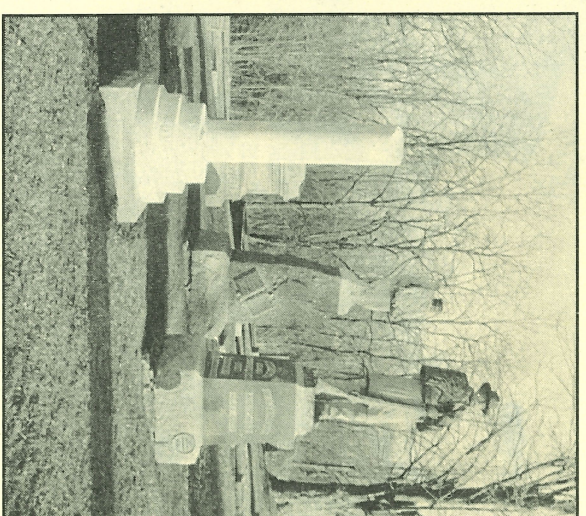
Because of the favorable location, climate and rich soil, James Hart Stark chose the Louisiana area to establish Stark Bros. Nursery. It is the oldest nursery in America and the largest mail order nursery in the world.

During the Civil War, families in Pike County were divided by their support of the Union or Confederate cause. Much of the county's history and tragedies of that period are revealed in tombstone inscriptions.

In addition to guiding visitors to cemeteries, this brochure will lead them through old river towns, quaint villages and the county seat with its impressive War Memorial.

Historical and architectural gems are scattered along the scenic country roads as well as in towns and villages. Many house artisans, antique shops, restaurants, bed and breakfast inns and hotels. Churches of every major denomination offer weekly services.

A picturesque Amish Community is located near Bowling Green.



Bowling Green Cemetery

LISTED BELOW ARE 15 CEMETERIES SELECTED FOR THIS BROCHURE:

BOWLING GREEN CITY CEMETERY is the resting place of Champ Clark, Speaker of the House of Representatives and Presidential Candidate in 1912, and his family. The family tombstone is a miniature of the Washington Monument. [5] on the map. From the Bowling Green Square, take North Main Cross Street 5 blocks north.

MCELWEE CEMETERY is the burial site of a Revolutionary War veteran. [6] on the map. From Highway 54 west of Louisiana, take State Rd UU north 2.9 miles to the gate with the address 17527. Go through the gate and drive 0.2 miles to a Y in the road. Turn left at the Y and go 0.1 miles.

ANTIOCH CEMETERY is near the oldest Presbyterian church in Pike County. [7] on the map. Hwy 61 south from Bowling Green to State Rd HH. 1.1 miles south on HH to County Rd 309 then 0.6 miles west on 309.

EOLIA COMMUNITY CEMETERY is the resting site primarily of African-Americans. [8] on the map. From Eolia city limit take State Rd D north for 0.7 miles.

ST. JOHN'S EPISCOPAL CEMETERY contains the graves of relatives of Meriwether Lewis of the Lewis & Clark Expedition. Descendants of Thomas Jefferson are also buried here. [9] on the map. From Eolia city limit take State Rd H east for 0.2 miles.

RAMSEY CREEK BAPTIST CEMETERY is alongside the oldest church in Pike County. [10] on the map. From Clarksville, take State Rd W west 0.5 miles past State Rd WW.

SMYRNA CEMETERY has the graves of many Civil War veterans as well as a victim of the battle of Ashley in 1864. Grave sites of the Civil War veterans are well marked with bronze plaques. [11] on the map. Hwy 161 to County Rd 420 in the southern part of the county. North on 420 0.5 miles to County Rd 494, then west 0.5 miles on 494.

FRANKFORD CEMETERY is one of the oldest in the northern part of the county. There are many unique stones. [12] on the map. Highway 61 north of Bowling Green to State Rd C then C west through Frankford to west side of town.

FAIRVIEW CEMETERY is the burial site of a Revolutionary War Veteran. [13] on the map. From Louisiana, 6 miles north on Hwy 79 to the junction of 79 & State Rd YY

PLEASANT HILL CEMETERY has the graves of Revolutionary War veterans. [14] on the map. From Frankford, go 5 miles west on State Rd C, then north 1/4 mile on County Rd 2.

ST. CLEMENT CEMETERY is a Catholic cemetery adjacent to the Catholic church in St. Clement. [15] on the map. From Hwy 61 in Bowling Green, take Hwy 161 south to St. Clement.

Tombstone Tours