

Welcome to Louisiana

"Land of the Golden Hills" was the term used to describe the Louisiana area by early French explorers, and rightfully so.

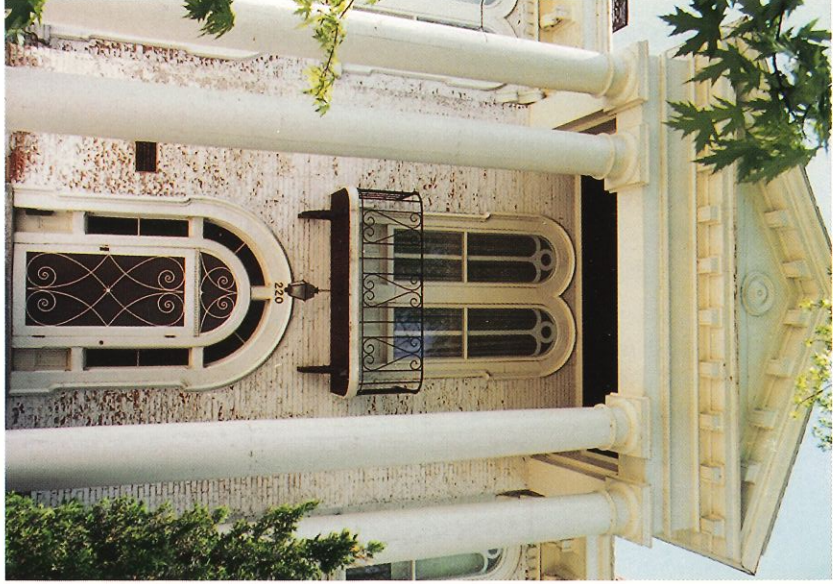
Since the first settlers made their home here in 1808, many have found Louisiana offers a quiet, peaceful atmosphere for raising a family and operating a business.

Three years after the first settlers came here, Buffalo Fort was built. In 1818, the original plat was laid out for the city and it became the county's first county seat.

Louisiana now boasts 4,000 residents, many of whom are descendants of the original settlers. Numerous lovely old homes, many built from the local millworks of the period, line the streets of Louisiana today. The downtown business district has been placed on the National Register of Historic Places due to its unique architectural style.

The area is diversified, lending itself to agriculture as well as many industries.

The residents of Louisiana welcome you to our fair city and invite you to return -- as a visitor or a resident.



Industry and Business

Louisiana is home to several major employers, including a nursery, two chemical plants, packaging and paper companies and hospital.

- Health care and ambulance services are available at the county hospital located in Louisiana
- Progressive schools undergoing extensive new construction
- Churches of major faiths
- Banking establishments
- 4,000 friendly residents
- Strong agriculture base

Downtown Central Business District

Listed on National Register of Historic Places.

Touted by the State Department of Natural Resources as having "the most intact Victorian Streetscape in the State of Missouri."



Antiques

Historic Louisiana is well known for its antique shops. Over a dozen such businesses are sure to please the most discriminating antique buff.

Lodging

Both Bed & Breakfasts and motels offer visitors to the area a comfortable night's stay.



Country Colorfest

An annual community-wide two-day festival featuring arts, crafts, music, food, parade and other activities is sponsored by the Chamber of Commerce on the third weekend of each October.

Louisiana Riverfront - Cleared fishing areas, picnic area, BBQ grills, camping, boat ramp.

Wallace Memorial Ballpark - Lighted ball fields, shelter, tennis court, jogging track, exercise course. Located off Kelly Lane on Memorial Drive.

Geery Park - Picnic area, playground. On Highway 79 South.

Lincoln Park - Playground, indoor basketball court. Located west end of Allen Street.

Veterans Park - Public tennis courts, public swimming pool, rest rooms, shelters, picnic area, playground. Located at Wells & Kentucky Streets.

Sunset Park - Shelter, rest rooms, ball field, picnic area, playground, benches, Scout House. Located on West Georgia Street.

Henderson-Riverview Park (At the crest of Main & Noyes Sts.) Magnificent view of Mississippi River; picnic facilities, benches, rest rooms, playground.

Shady Parks

Well-maintained

Louisiana Missouri



Information

Chamber of Commerce
(573) 754-5921
Web page: louisianamo.com

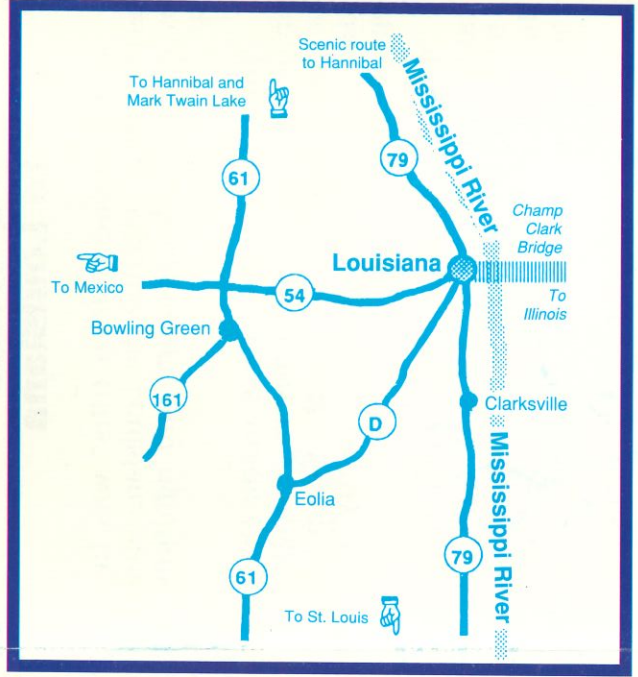
City Hall
(573) 754-4132

Police Department
(573) 754-4021

Emergency
Dial 911



LOUISIANA



Louisiana is located on the edge of the Mississippi River where Hwy. 54 meets scenic Hwy. 79

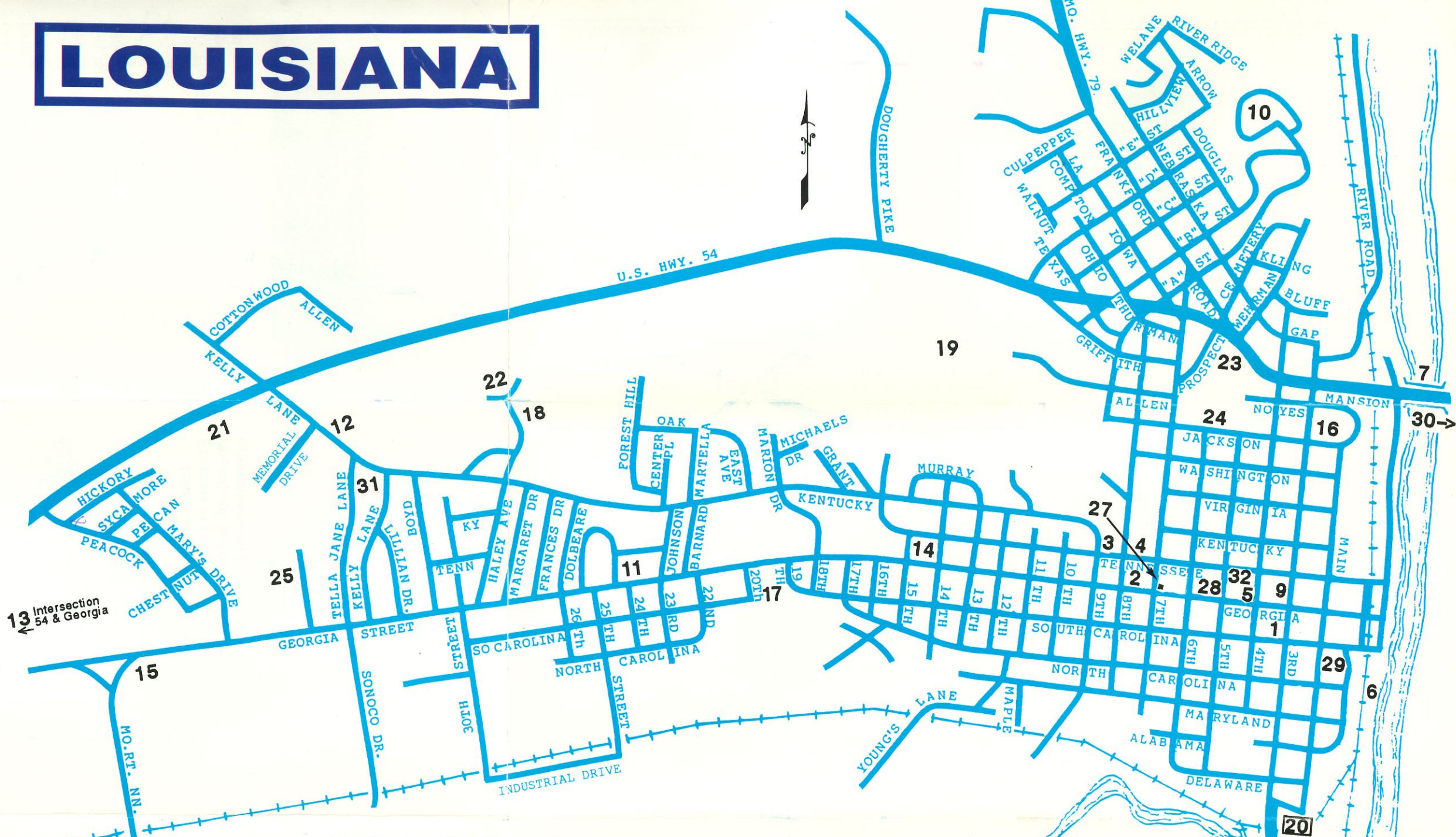
- 1-1/2 hours north of St. Louis
- 30 miles south of Hannibal
- Only 45 minutes from Mark Twain Lake and Cannon Dam

Boating Facilities

- Boat launch at Louisiana Riverfront with large parking area
- Across the bridge to marina, a large boating facility to accommodate all sizes of boats

Champ Clark Bridge

- Only automobile bridge from Hannibal to St. Louis, allowing easy access to the Midwest



Points of Interest

- | | |
|-----------------------------------|--|
| 1. Chamber of Commerce Office | 18. Veterans Park & Swimming Pool |
| 2. City Hall | 19. Lincoln Park |
| 3. Police Station | 20. Geery Park |
| 4. Fire Station | 21. Wallace Memorial Ballpark |
| 5. Historic Downtown Area | 22. Primary School |
| 6. Riverfront Park and Boat Ramp | 23. Meriwether School |
| 7. Champ Clark Bridge | 24. Middle School |
| 8. Third Oldest Miss. RR Bridge | 25. Louisiana R-II High School |
| 9. Carnegie Library | 26. Clinton Springs |
| 10. Riverview Cemetery | 27. Masonic Lodge |
| 11. Pike County Memorial Hospital | 28. Pike County Senior Citizens |
| 12. Catholic & Jackson Cemeteries | 29. Trimble House for Senior Citizens |
| 13. Jewish Cemetery | 30. Marina |
| 14. Former Gov. Stark Home | 31. American Legion Park |
| 15. Stark Cabin | 32. Elks Lodge |
| 16. Henderson-Riverview Park | 33. Buffalo Fort Site & Buffalo-Jordan Cemetery off Rt. D. |

Other Area Attractions

- Buffalo Fort Site-Buffalo Jordan Cemetery
- Champ Clark's Honeyshuck
- Mark Twain Cave
- Pike County Country Club
- Third Oldest Railroad Bridge Across Mississippi River