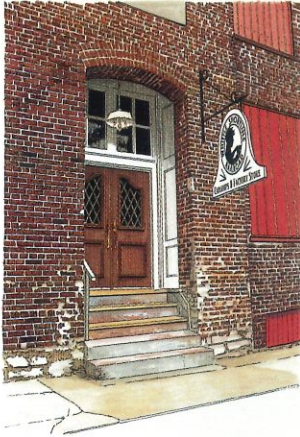
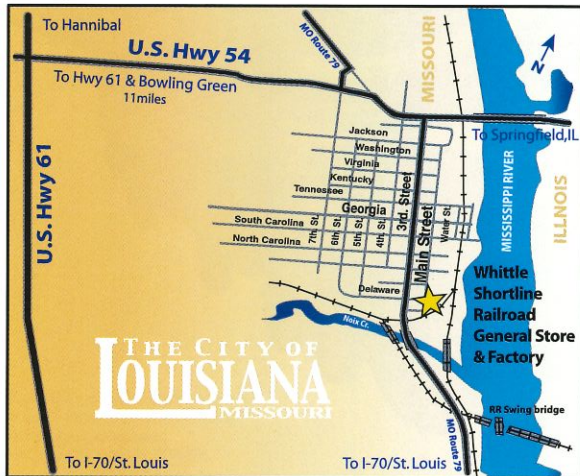


The Whittle Shortline Railroad factory is located in Louisiana, MO; just over an hour's drive from St.

Louis and Springfield, IL. The company's manufacturing operations occupies the complete 2nd floor of the historic Glove Factory building on the banks of the Mississippi River. Louisiana serves as the crossroads of the Kansas City Southern and Burlington Northern Santa Fe railroads and is home to the historic railroad "swing bridge" across the Mississippi River.



Come and see our skilled craftsmen take a raw board and turn it into the world's best wooden train toys. Follow the entire process from rough cut board, through the wood shop, paint shop and finally into graphics and final assembly.



**Handcrafted
Wooden Toy
Trains**

LOUISIANA

600 South Main Street
Louisiana, Missouri, 63353
573-754-6240

General Store Hours

Mon. thru Fri. 8:00 a.m. to 4:30 p.m.
Saturday 10:00 a.m. to 4:00 p.m.
Sunday 12:00 p.m. to 4:00 p.m.

Factory Office 573-754-4033

Web site – www.woodentrain.com

E-mail – kelly@woodentrain.com

VALLEY PARK

24 Front Street
Valley Park, Missouri 63088
636-861-3334

Retail Store Hours

Tues. thru Fri. 10:00 a.m. to 4:00 p.m.
Saturday 9:00 a.m. to 4:00 p.m.
Sunday 12:00 p.m. to 4:00 p.m.



Fun For The Whole Family

**WHITTLE
SHORTLINE
RAILROAD**

**Handcrafted
Wooden Toy
Trains**

© 2006 Whittle Toy Company, Inc., © The Little Engine That Could™ and all related titles, logos, and characters are trademarks of Penguin Group (USA) Inc. Brio® and Thomas® are trademarks of their respective corporations



FACTORY TOUR & GENERAL STORE

Come Enjoy Our Toy Train Play Space And General Store

The Whittle Shortline Railroad is a family owned company handcrafting American wooden toy trains including Amtrak, Canadian railroads, and most recently received a license from NBC/Universal Pictures to manufacture "The Little Engine That Could"® toy trains.

The Whittle Shortline Railroad story is of a "hobby gone terribly wrong". In 1996, Mike Whitworth began creating wooden toy trains in his garage as gifts for the neighborhood kids. Soon local merchants began requesting Mike's toy trains and the Whittle Shortline Railroad was born.



By 1999, the company had outgrown the garage and in fact the whole house, and moved its manufacturing operations into the nearly abandoned Frisco Hotel in Valley Park, Missouri. The classic old railroad building also became the home of the company's retail store and host for birthday and holiday parties.

In 2005 the Whittle Shortline again outgrew its surroundings and moved all of its manufacturing to The Glove Factory in Louisiana, Missouri leaving the Valley Park Frisco Hotel as a retail store for birthday and fun nights.



Compatible with Brio® and Thomas®

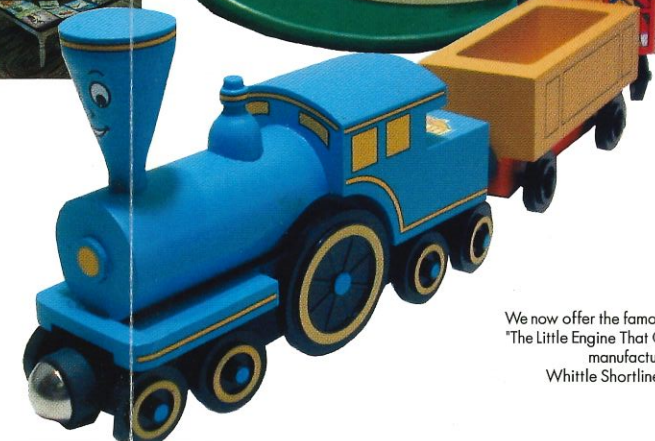
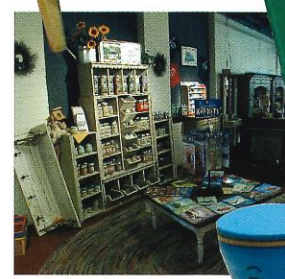
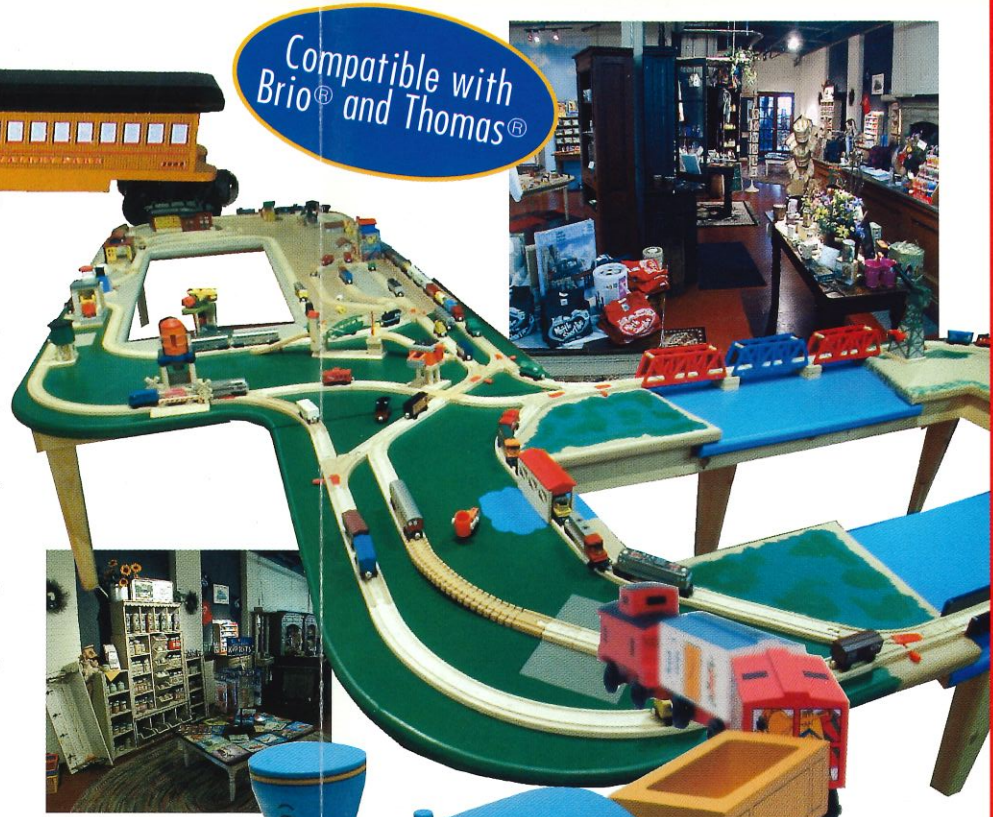
Great gifts for children and adults alike



The Glove Factory is also the site of the Whittle Shortline General Store featuring a giant toy train play area as well as a full display of all the Whittle Shortline Railroad toys.

The General Store also offers a wonderful selection of foods including: home made jams, sorghum, honey, and salsas. Our Frontier Soups and Fried Green Tomato fix-ins are great for carryins or summer suppers. Swan Creek and Woodwick candles will fill your home with aromatic scents and the sounds of a crackling fire.

Our linens, primitives, birdhouses, giftware and local crafted items are wonderfully displayed in one-of-a-kind country architectural lumber crafted furniture. The Whittle General Store will provide a unique country experience for your family.



We now offer the famous childrens' book "The Little Engine That Could"™ toy trains manufactured upstairs in the Whittle Shortline Railroad factory.